



Certificate of Analysis

QA SAMPLE - INFORMATIONAL ONLY

1 of 3

ICAL ID: 20210324-054
Sample: CA210324-038-225
CBD Full Spectrum Chamomile & CBD Enriched Tea, 400mg, 20c
Strain: CBD Full Spectrum Chamomile & CBD Enriched Tea, 400mg, 20c
Category: Ingestible

LUX MEDI RX
Lic. #
None
San Diego, CA 92121
Lic. #

Batch#:
Primary Size:
Batch Size:
Collected: 03/27/2021; Received: 03/27/2021
Completed: 03/27/2021

Moisture NT	Δ9-THC 10.51 mg/unit	CBD 159.22 mg/unit	Total Cannabinoids 520.47 mg/unit	Total Terpenes NT
Water Activity NT	0.50 mg/serving	7.58 mg/serving	24.78 mg/serving	

Summary	SOP Used	Date Tested	
Batch			Complete
Cannabinoids	SOP:POT-E004-Ed	03/26/2021	Complete



Scan to see results

Cannabinoid Profile

1 Unit = package, 33.57 g. 21 serving(s) per package.

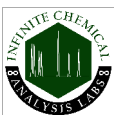
Analyte	LOQ	LOD	%	mg/g	mg/unit	Analyte	LOQ	LOD	%	mg/g	mg/unit
THCa	0.11	0.06	ND	ND	ND	CBDV	0.11	0.06	0.005	0.05	1.78
Δ9-THC	0.11	0.06	0.031	0.31	10.51	CBN	0.11	0.06	0.006	0.06	2.05
Δ8-THC	0.11	0.06	ND	ND	ND	CBGa	0.11	0.06	0.022	0.22	7.52
THCV	0.11	0.06	ND	ND	ND	CBC	0.11	0.06	0.012	0.12	3.99
CBDa	0.11	0.06	0.999	9.99	335.40	Total			1.550	15.50	520.47
CBD	0.11	0.06	0.474	4.74	159.22						

Total THC=THCa * 0.877 + d9-THC; Total CBD = CBDa * 0.877 + CBD; NR= Not Reported, ND= Not Detected, *Reported by Dry Mass*; *analytical instrumentation used Cannabinoids:UHPLC-DAD, Moisture:Mass by Drying, Water Activity:Water Activity Meter, Foreign Material:Microscope* *Density tested at a temperature range between 19-24 °C, *Water Activity tested at a humidity range between 0-90% Relative Humidity. All QA samples are sampled by the client, All California State Compliant samples sampled using SAMPL-SOP-001

Terpene Profile

Analyte	LOQ	LOD	%	mg/g	Analyte	LOQ	LOD	%	mg/g
---------	-----	-----	---	------	---------	-----	-----	---	------

NR= Not Reported thus no analysis was performed, ND= Not Detected thus the concentration is less then the Limit of Detection (LOD), *analytical instrumentation used:HS-GC-MS*



Infinite Chemical Analysis Labs
8380 Miramar Mall #102
San Diego, CA
(858) 623-2740
www.infiniteCAL.com
Lic# C8-0000019-LIC

Josh M Swider

Josh Swider
Lab Director, Managing Partner
03/27/2021

Confident Cannabis
All Rights Reserved
support@confidentcannabis.com
(866) 506-5866
www.confidentcannabis.com



This product has been tested by Infinite Chemical Analysis, LLC using valid testing methodologies and a quality system as required by state law. All LQC samples were performed and met the prescribed acceptance criteria in 16 CCR section 5730, pursuant to 16 CCR section 5726(e)(13). Values reported relate only to the product tested. Infinite Chemical Analysis, LLC makes no claims as to the efficacy, safety or other risks associated with any detected or non-detected levels of any compounds reported herein. This Certificate shall not be reproduced except in full, without the written approval of Infinite Chemical Analysis, LLC.



Certificate of Analysis

QA SAMPLE - INFORMATIONAL ONLY

2 of 3

ICAL ID: 20210324-054
Sample: CA210324-038-225
CBD Full Spectrum Chamomile & CBD Enriched Tea, 400mg, 20c
Strain: CBD Full Spectrum Chamomile & CBD Enriched Tea, 400mg, 20c
Category: Ingestible

LUX MEDI RX
Lic. #
None
San Diego, CA 92121
Lic. #

Batch#:
Primary Size:
Batch Size:
Collected: 03/27/2021; Received: 03/27/2021
Completed: 03/27/2021

Residual Solvent Analysis

Category 1	LOQ	LOD	Limit	Status	Category 2	LOQ	LOD	Limit	Status	Category 2	LOQ	LOD	Limit	Status
------------	-----	-----	-------	--------	------------	-----	-----	-------	--------	------------	-----	-----	-------	--------

NR= Not Reported thus no analysis was performed, ND= Not Detected thus the concentration is less then the Limit of Detection (LOD) , *analytical instrumentation used=HS-GC-MS*

Heavy Metal Screening

	LOQ	LOD	Limit	Status
--	-----	-----	-------	--------

NR= Not Reported thus no analysis was performed, ND= Not Detected thus the concentration is less then the Limit of Detection (LOD) , *analytical instrumentation used:ICP-MS*

Microbiological Screening

	Result	Status
--	--------	--------

ND=Not Detected; *analytical instrumentation used:qPCR*



Infinite Chemical Analysis Labs
8380 Miramar Mall #102
San Diego, CA
(858) 623-2740
www.infiniteCAL.com
Lic# C8-0000019-LIC

Josh M Swider

Josh Swider
Lab Director, Managing Partner
03/27/2021

Confident Cannabis
All Rights Reserved
support@confidentcannabis.com
(866) 506-5866
www.confidentcannabis.com



This product has been tested by Infinite Chemical Analysis, LLC using valid testing methodologies and a quality system as required by state law. All LQC samples were performed and met the prescribed acceptance criteria in 16 CCR section 5730, pursuant to 16 CCR section 5726(e)(13). Values reported relate only to the product tested. Infinite Chemical Analysis, LLC makes no claims as to the efficacy, safety or other risks associated with any detected or non-detected levels of any compounds reported herein. This Certificate shall not be reproduced except in full, without the written approval of Infinite Chemical Analysis, LLC.



Certificate of Analysis

QA SAMPLE - INFORMATIONAL ONLY

3 of 3

ICAL ID: 20210324-054
Sample: CA210324-038-225
CBD Full Spectrum Chamomile & CBD Enriched Tea, 400mg, 20c
Strain: CBD Full Spectrum Chamomile & CBD Enriched Tea, 400mg, 20c
Category: Ingestible

LUX MEDI RX
Lic. #
None
San Diego, CA 92121
Lic. #

Batch#:
Primary Size:
Batch Size:
Collected: 03/27/2021; Received: 03/27/2021
Completed: 03/27/2021

Chemical Residue Screening

Category 1	LOQ	LOD	Status	Mycotoxins	LOQ	LOD	Limit	Status
------------	-----	-----	--------	------------	-----	-----	-------	--------

Category 2	LOQ	LOD	Limit	Status	Category 2	LOQ	LOD	Limit	Status
------------	-----	-----	-------	--------	------------	-----	-----	-------	--------

Unknown Analyte(s):

NR= Not Reported thus no analysis was performed, ND= Not Detected thus the concentration is less then the Limit of Detection (LOD) , *analytical instrumentation used:LC-MSMS & GC-MSMS*



Infinite Chemical Analysis Labs
8380 Miramar Mall #102
San Diego, CA
(858) 623-2740
www.infiniteCAL.com
Lic# C8-000019-LIC

Josh M Swider

Josh Swider
Lab Director, Managing Partner
03/27/2021

Confident Cannabis
All Rights Reserved
support@confidentcannabis.com
(866) 506-5866
www.confidentcannabis.com



This product has been tested by Infinite Chemical Analysis, LLC using valid testing methodologies and a quality system as required by state law. All LQC samples were performed and met the prescribed acceptance criteria in 16 CCR section 5730, pursuant to 16 CCR section 5726(e)(13). Values reported relate only to the product tested. Infinite Chemical Analysis, LLC makes no claims as to the efficacy, safety or other risks associated with any detected or non-detected levels of any compounds reported herein. This Certificate shall not be reproduced except in full, without the written approval of Infinite Chemical Analysis, LLC.